

# West Point Commons ~ 3,300sf 2nd Gen. Restaurant



## Property Features:

Gross Leasable	94,146sq
Year Built:	2003
Construction:	Concrete Block
Roof Cover:	Built-up over Metal Deck
Parking Ratio	6.04 per 1,000sf

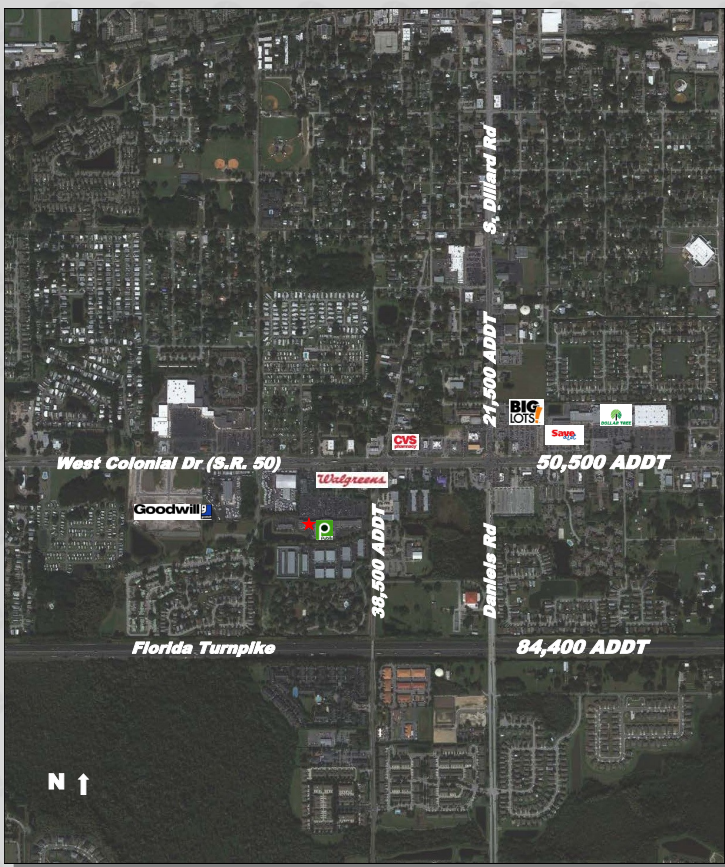
## Available Space:

Unit 103	3,300sf - 55' x 60'
(Former Breakfast Club)	

## Rental Rates:

Base Rent:	\$25.00 per sf
Additional Rent (NNN) Estimated at	\$5.25 per sf

*Note: All rents subject to Sales Tax*



[www.RetailAssetManagementInc.com](http://www.RetailAssetManagementInc.com)

## West Point Commons Grocery Anchored Neighborhood Center

**13750 West Colonial Drive  
Winter Garden, FL 34787**

The information given herewith is obtained from sources considered reliable. However we are not responsible for misstatements of facts, errors or omissions, withdrawal from market, modification of terms and conditions, or change in pricing without notice. The information supplied herein is for informational purposes only and shall not constitute a warranty or assurance that the information is correct. Any person intending to rely upon the information supplied herein should verify said information independently.

Pursuant to Section 475.25(1)(q) Florida Statutes, and Rule 21V-10.033 Florida Administrative Code, Retail Asset Management, Inc. makes the following disclosures, that in the event a lease or sales contract is entered into, Retail Asset Management, Inc. represents the Lessor/Seller exclusively and Lessee/Buyer may be responsible for additional costs, such as their own attorney's fees, security deposit, and telephone and utility deposits.

*For Additional Information Contact*

**Retail Asset Management, Inc.**

*Sales • Management • Leasing • Development*

*Paul Cooley (727) 480-0063 ~ Wayne Purdy (727) 510-3707*

*pcooley@RetailAssetManagementInc.com ~ wpurdy@RetailAssetManagementInc.com*

*Ofc (727) 446-3032 ~ Fax (727) 446-3080*

*P.O. Box 5666 • Clearwater • Florida 33758-5666*